

May 23 - 07 -

92

49  
513

Wm H. Clark to Sarah Clark wife - June 5-1905 -  
Pt. S.E. & SW 1/4 Sec. 17 - T.6.N - R.1.W.

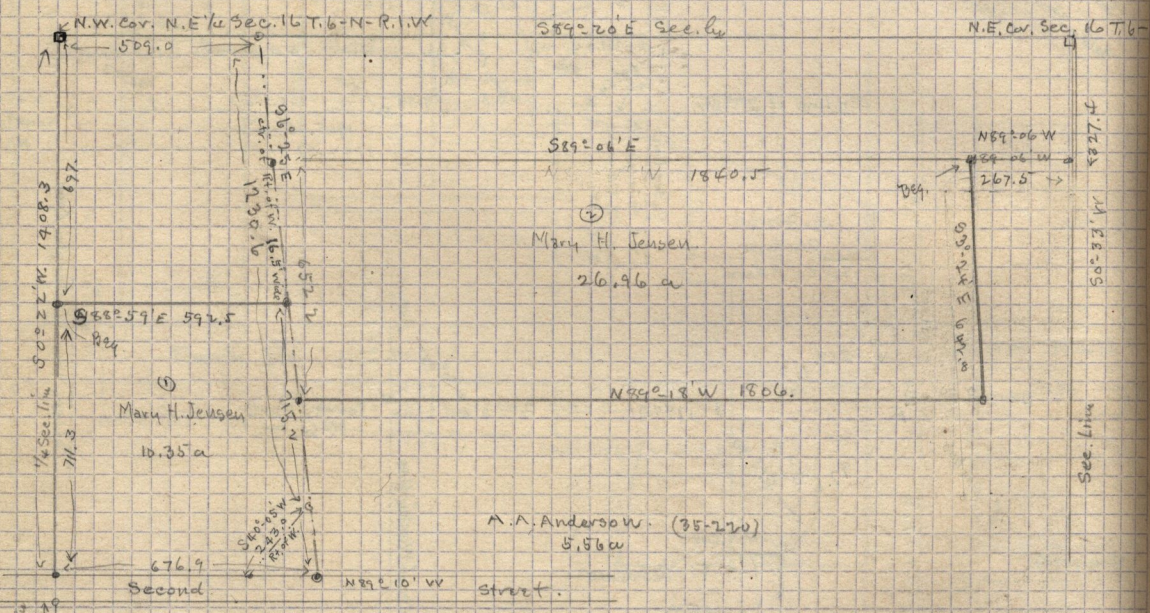
Req. 13.64 ch. E. 3.39 ch. S. of N.W. Cor. said S.E. 1/4 Sec. 17 - Thence S 3°-45' W. 3.70 ch - N 68°-15' W 3.75 chs - S 1°-45' W 9.43 chs - W 4.94 chs - N 3.87 chs - W. 6.95 chs - N 8.01 chs - N 89°-45' E 15.86 ch to beg. 12.59 ac. Also, at SE 1/4 W 1/4 and 3/4 Sec. 17 - Beg. 11.70 chs. S. of N.W. Cor. S. 1/4 said Sec. Thence E. 5.22 chs - S 2.85 chs. - W 7.02 ch - N 2.85 chs - thence E 11.80 ch to beg. 2.0 acres,

Montgomery wants survey of part of above -

May 23-1907

Copy of Abstract - David Jensen - Part of N.E. 1/4 of Sec. 16 - T.6-N-R.1.W  
 ① Beg. at point on W. line of said 1/4 Sec. 697.0 ft S 0°-22' W. from N.W. Cor. of 1/4 Sec. Thence S 88°-59' E 592.5 ft - S 6°-25' E 715.2 ft - to N. line 2nd Street - N 89°-10' W 676.9 ft - along N. line 2nd Str. to W. line of said 1/4 Sec. - N 0°-22' E 711.3 ft along 1/4 Sec. line to beg. ② Also beg 267.5 ft N 89°-06' W from a point on the E. line of said 1/4 Sec. 327.4 ft S 0°-33' W. from the N.E. cor. of said 1/4 Sec. Running thence S 3°-24' E 642.8 ft - N 89°-18' W 1806.7 ft - N 6°-25' W 652.3 ft - S 89°-06' E 1840.5 ft to beg. Granting & reserving a right of way 1 rod wide, the center line of said right of way is described as follows: Beginning at a point on the North line of said 1/4 Sec. 509.0 ft S 89°-20' E from the N.W. cor. of said 1/4 Sec. - Running thence S 6°-25' E 1230.6 ft - S 40°-05' W 243.0 ft to the N. line of 2nd Street. 10.25 acres.

David Jensen wants above tract divided in 2 equal parts by lines run S & W -



Transverse Table of tract No 2 - beg. at N.E. Cor. of same

	N	S	E	W	Sum	Cos.
S 88°-59' E	642.8				.0593	.9982
N 89°-18' W	1806.0	22.03		805.82	.9999	.0122
N 6°-25' W	652.3	648.09		72.85	.11176	.9937
S 89°-06' E	1840.5				.99988	.0157
	670.12	670.54	7078.40	1878.67		

Transverse Table of Tract No 11 beg. at N.W. cor. of same

S 88°-59' E	592.5				.0593	.9982
S 6°-25' E	715.2				.11176	.9937
N 89°-10' W	676.9	9.84		676.82	.99989	.01454
N 0°-22' E	711.3	711.23		4.55	.00640	.99998
	721.14	721.20	676.82	676.82		